

School of Engineering Mathematics and Technology

Presenter:

Monday 23 June 2025



Digital Health Research Group:

A multidisciplinary team with more than 100 academics

- **Research**

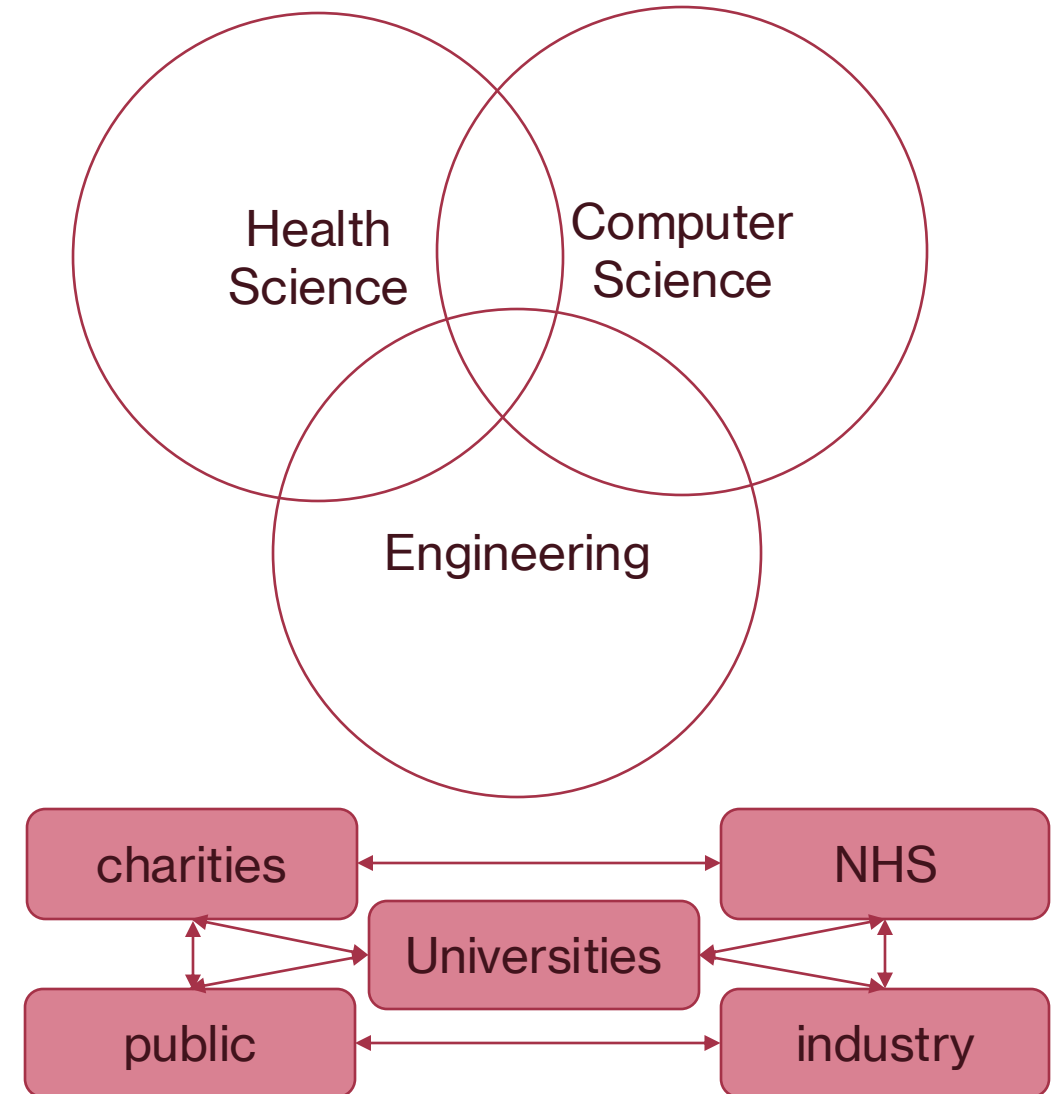
- SPHERE
- TORUS
- LEAP Digital Health Hub

- **Skills & Knowledge**

- CDT in Digital Health and Care
- MSc in Digital Health and Care

- **Networking**

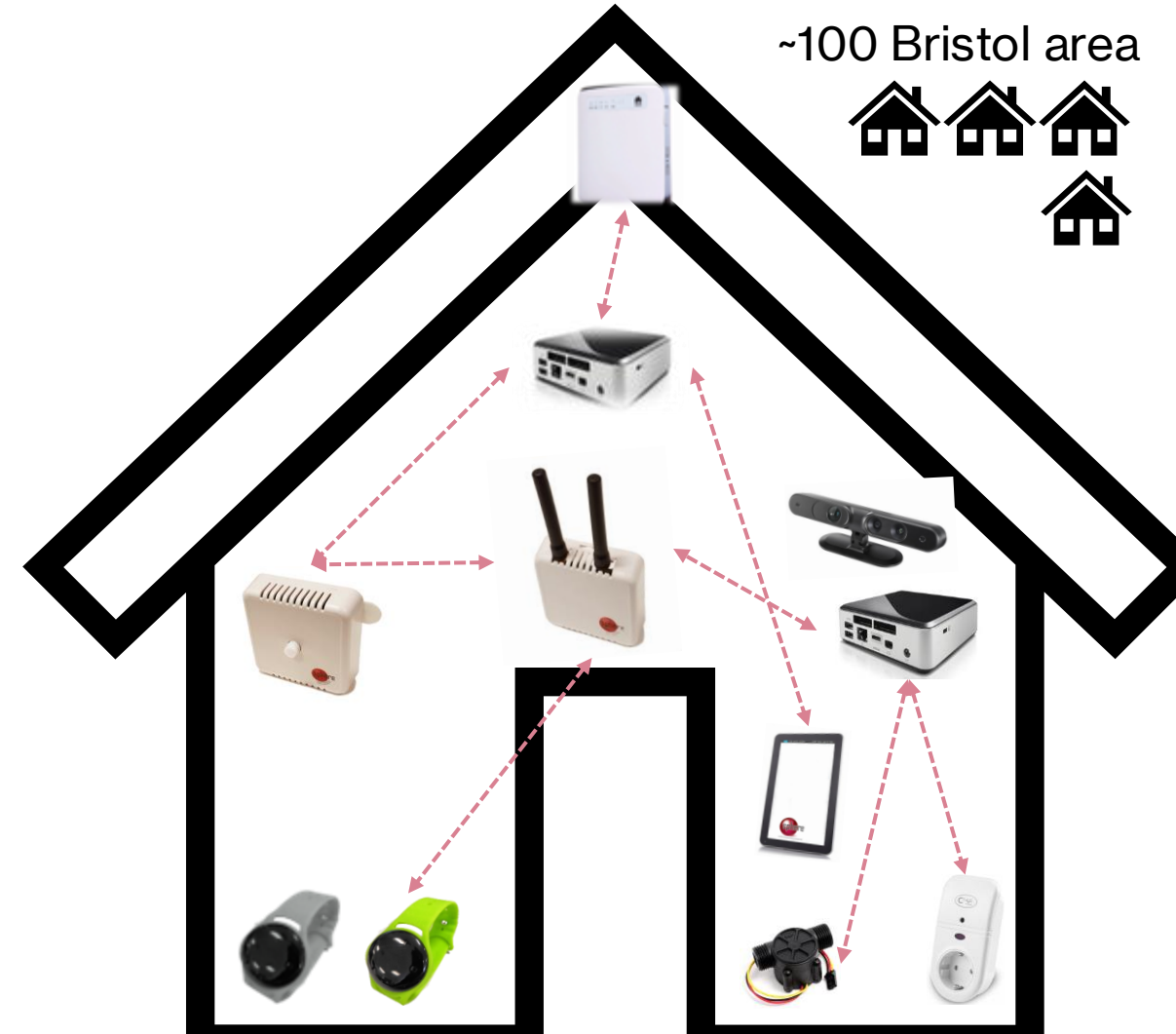
- Digital Health Seminar Series
- Festival of Digital Health



SPHERE

Sensor Platform for Healthcare in a Residential Environment

- Flagship project for the Digital Health
- **£25M** of funding since 2013 from EPSRC, MRC and H2020
 - CUBOiD, PD Sensors, OPERA, EurValve, HEmiSPHERE, SPHERE-Cared
- Design and deployment of custom IoT technologies in **over 100** local homes
- Collaborations between researchers, clinicians and the public
- Research in wearable sensors, low power communication networks, computer vision systems and machine learning



TORUS



Transforming the Objective Real-world measurement of Symptoms

- A novel platform of sensing technologies for patients' own homes, to **monitor Parkinson's disease progression**
- **£6.17M** of funding from EPSRC (2023-2028)
- **39** staff members in Bristol and Newcastle
- 6 Work packages:
 1. A Wearable for Data Fusion
 2. Video Sensing for Data Fusion
 3. Data Fusion and Distributed Machine Learning
 4. System Integration, Security, Testing and Trial Support
 5. PPIE, Codesign, Ethics and Acceptability
 6. Into the Real World



The continuation
of the SPHERE
project



TORUS Team at the



University of
BRISTOL



Ian
Craddock
Director



Majid
Mirmehdi



George
Oikonomou



Aisling
O'Kane



Cathy
Morgan



Kenton
O'Hara



Mae Hazell



Zahraa
Abdallah



George
Oikonomou



Raul Santos
Rodriguez



James Pope



Telmo de
Menezes e
Silva Filho



Lindsay
Bishop

Project Staff

Researchers



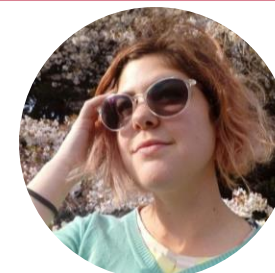
Em Tonkin



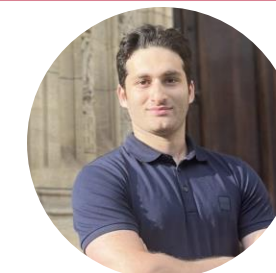
Shuhao Dong



Jingjing Liu



Elaine
Czech



Amirhossein
Dadashzadeh



Guanxiong
Sun



Oscar
Illingworth

TORUS Team at



Lynn
Rochester
Co-Director



Paul
Watson



Abi
Durrant



Silvia Del Din



Alison
Yarnall



David Kirk

Co-Investigators



Lenia
Margariti



Kirsty
Scott



Lisa Alcock



Chloe
Hinchliffe



Ann Gibson
**Project
Staff**

Researchers



TORUS Highlighted research

- Duan, S., Dadashzadeh, A., Whone, A. L. & Mirmehdi, M.
Trajectory-guided Motion Perception for Facial Expression Quality Assessment in Neurological Disorders. (2025). 19th International Conference on Automatic Face and Gesture Recognition (FG). Institute of Electrical and Electronics Engineers (IEEE), (International Conference on Automatic Face and Gesture Recognition).
- Elaine Czech, Ewan Soubutts, Ian J Craddock, Aisling Ann O'Kane.
Understanding the Multimodal Voice Assistant as an Informal and Social Care Support Tool in the UK. (2025). ACM Conversational User Interfaces Conference.

LEAP Digital Health Hub

Leadership Engagement Acceleration & Partnership



- Hub for the South West of England and Wales
- **5** regional universities and HDR UK
- Led by the University of Bristol
- Network of **200+** organisations
- **£4M** of funding from EPSRC (2023–2026)
- **£1M** of research funding allocated
- Portfolio of **10** collaborative research projects
 1. Care outside of the hospital
 2. Service and resource planning
 3. Frailty, fall prediction and fall prevention
 4. Smartphone and wearable technologies



LEAP Team in the



Ian
Craddock
**Hub
Director**



Hanna
Isotalus
**Deputy
Director**



Rachel
Prior
**Hub
Manager**



Karen Dawe
**Skills and
Knowledge
Deputy
Director**



Andrew
Dowsey
**Fellowship
Programme
Director**



Raul Santos
Rodriguez
**Capability
Programme
Director**



Kirsten
Cater
Co-I



Laura Yiqing
Wang
**Online
Coordinator**



Emma Brown
**Hub
Administrator**



Miquel
Perello
Nieto



Matthew
Wragg



Nawid
Keshtmand



Emily
Nielsen

Researchers in Residence

LEAP Team in other organizations



Richard
Luxton
**Lead for
UWE
Bristol**



David A.
Ellis
**Lead for
University
of Bath**



Daniel
Gartner
**Lead for
Cardiff
University**



University
of Exeter

Martin
Pitt
**Lead for
University
of Exeter**



Christopher
Yau
**Lead for
HDR UK**



Andy
Gibson
Co-I



Christos
Vasilakis
**Fellowships
Programme
Co-Director**



Maneesh
Kumar
Co-I



Krasimira
Tsaneva-
Atanasova
Co-I



Antonia
Dingle
**Skills and
Knowledge
Programme
Representative**



Janice
Kiely
Co-I



Paul
Harper
Co-I



Rosie
Wakeham
**Skills and
Knowledge
Programme
Representative**



LEAP Highlighted research

1. Tong Computer Interface for Widening Computer Access (Withey, D., et al., UWE)
2. Novel Wearable-based Stress Detection Using Earables and Smartwatches (Clarke, C., et al., Bath)
3. Synthetic Data Generation for Privacy-Preserving Prediction Modelling in Critical Care (McWilliams, C., et al., Bristol)
4. Predicting Falls Using Routinely Collected Primary Care Data in Heart Failure Population (Owusu, B., et al., Exeter)

(1)



(2)



CDT in Digital Health and Care

Centre for Doctoral Training

- **£6.6M** of funding from EPSRC (2019-2027)
- **5** cohorts (~**10** students per year, total **50**)
- Research interests include:
 - A. Precision Digital Health & Self-Management
 - B. AI & Machine Learning for Prediction & Diagnosis
 - C. Mental Health & Behaviour Change Technologies
 - D. Health Robotics & Simulation
 - E. Wearables & Digital Biomarkers
 - F. Human-Centred Design & Inclusive Technologies
 - G. Global & Public Health Innovation

CDT Management Team



Ian
Craddock
**Previous
Director**



Amberly
Brigden
Director



Hanna
Isotalus
**Deputy
Director**



Lucy
Yardley
**Research
Programme
Lead**



Robert
Piechocki
**Research
Programme
Lead**



Oscar
Cordero
Llana
**Training
Programme
Lead**



Raul Santos
Rodriguez
**Training
Programme
Lead**



George
Oikonomou
**Technician
Task
Manager**



Tom
Verheyden
**CDT
Manager**



Jon Bird



Amberly
Bridgen



Erin
Dooley



Hanna
Kristiina
Isotalus



Aisling
O'Kane

Research and Teaching Staff

CDT Students by cohort



2023



Anika
Pinto



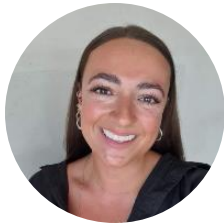
Sarah
Koerner



Hans
Johnson



Tefkros
Chimonas



Emily
Quilter



Jerusaa
Vasikaran



Ryan
Beck



Monib
Sediqi



Angela
Pateman



Weiyl Li

2022



Qiushuo
Cheng



Abiola
Saka



Yujie Dai



Amanda
Sissons



Cicely
Mathews



Fin
Schofield



Dina
Molnar



Abdelrahman
Otify



Yelu Gu



Ellen Weir



Sarah
Wilkie-
Ryan

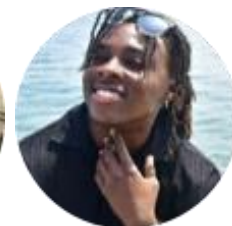


Verónica
Blanco
Gutiérrez

2021



Marah
Alassaf



Timeyin
Arueyingho



Sydney
Charitos



Eszter
Vigh



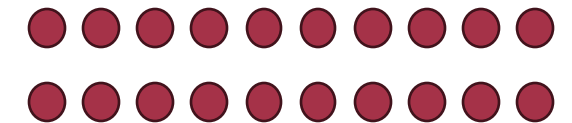
Daniel
Joinson



Gavryel
Martis



Sammy
Shorthouse



... and 20 more from
2019-2020

CDT Highlighted research



- Quilter, Emily & Butlin, Cynthia & Carrion, Carme & Ruiz-Postigo, Jose-Antonio. **The WHO Skin NTD mobile application – a paradigm shift in leprosy diagnosis through Artificial Intelligence?**. Leprosy Review. (2024).
- Arueyingho O, Aprioku J, Marshall P, O'Kane A. **Insights Into Sociodemographic Influences on Type 2 Diabetes Care and Opportunities for Digital Health Promotion in Port Harcourt, Nigeria: Quantitative Study**. JMIR Diabetes. (2024).
- Wijewardhane, N., Denniss, A.R., Uppington, M. et al. **Long-term imaging and spatio-temporal control of living cells using targeted light based on closed-loop feedback**. J Micro-Bio Robot. (2024).
- Deighan, M.T., Simpson, D., Brigden, A. et al. **Perspectives of healthcare professionals on the use of immersive virtual reality in teenage and young adult oncology: a qualitative interview study**. BMC Digit Health 2, 22 (2024).

Digital Health Seminar Series

For more information visit:
bristol.ac.uk/dh-seminars



Miquel
Perello Nieto



Matthew
Wragg



Emily
Nielsen



Sarah
Koerner



Nawid
Keshtmand



Emma
Brown

Developing international interdisciplinary connections
between academics, healthcare professionals,
and industry.

Tuesdays
14:00 – 15:00
Bi-weekly

**Seminar Room 1,
AIMS Conference Centre**



Festival of Digital Health

South West England
and Wales



Scan the QR or visit
bit.ly/leap-festival
for more information

30 June -
4 July 2025



Digital Health Research Group

School of Engineering Mathematics
and Technology

Data Science Lab Away Day

Presenter:

Dr. Miquel Perello Nieto, Senior Research Associate

Monday 23 June 2025



University of
BRISTOL